

The Symbol of Quality



Ambica
TRADING CORPORATION





✓ 4503



4509



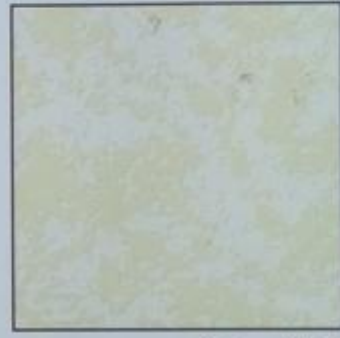
✓ 4524



4504



4508



✓ 4525



4507



4513



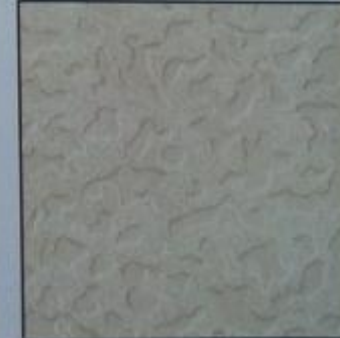
✓ 4521



4505



4506



✓ 4522

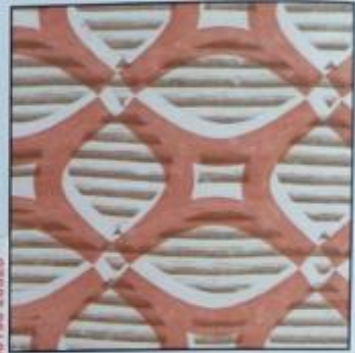
Ambica Trading Corporation
Girish Patel M. 76965 11199
Krit Patel M. 96240 86688
90168 20520



2089



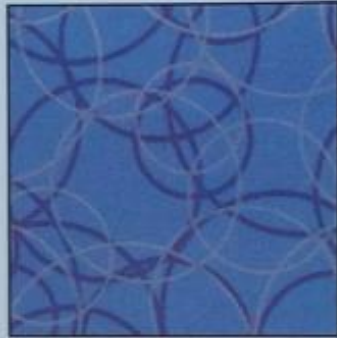
1500



2133



2090



5201



2134



2091



2061



2136



2092



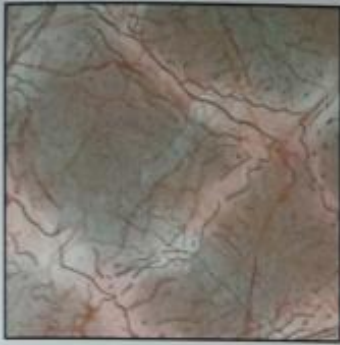
2063



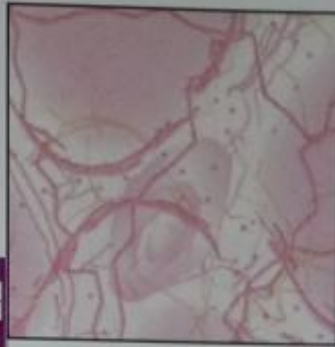
2135

Kirt Patel M. 98240 86688
90168 20520
Girish Patel M. 76985 11199

Ambica Trading Corporation



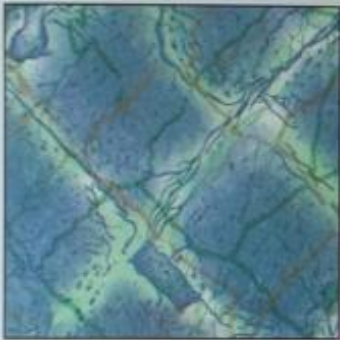
4551



1033



2056 - 2



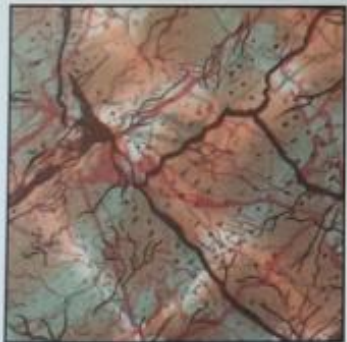
4554



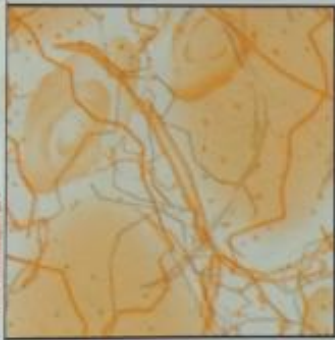
1036



2055



✓ 5075



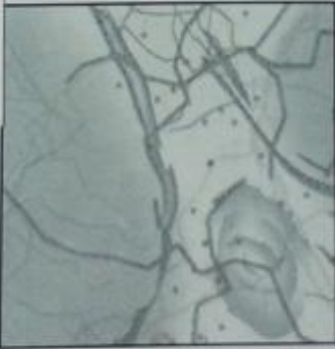
1034



2039



5098



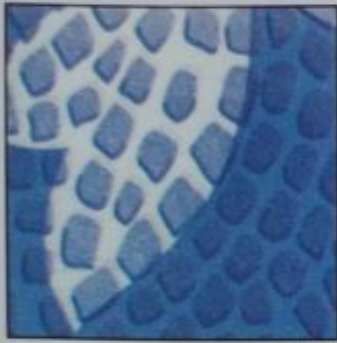
1035



2040

Ambica Trading Corporation

Girish Patel M. 76985 11199
Kirit Patel M. 98240 86688
90168 20520



5181



✓ 5182



1019



5183



5184



1020



5185



✓ 5186



2151



✓ 5187



2088-O



2152

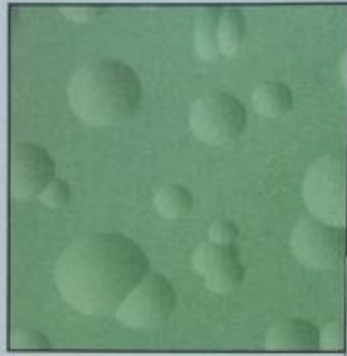
Kirrit Patel M. 98240 89088
90166 20520

Girish Patel M. 76985 11199

Ambica Trading Corporation



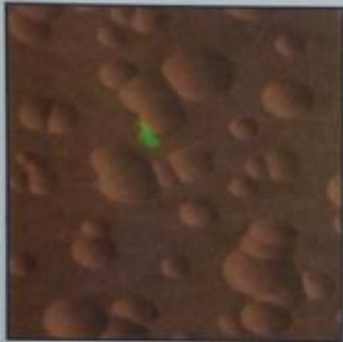
4516



4517



✓ 4515



✓ 4514



✓ 5503



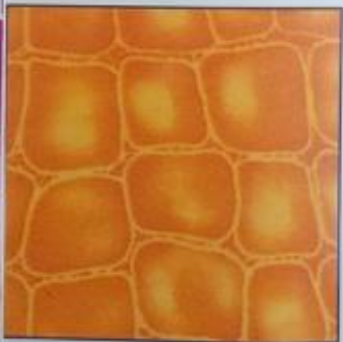
1114



✓ 4519



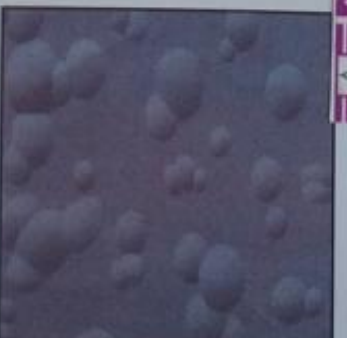
4518-A



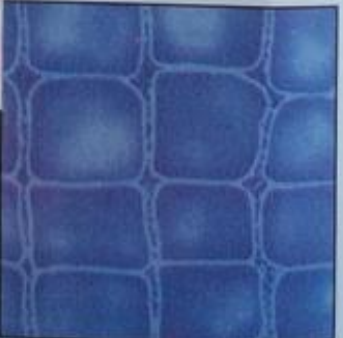
1110



✓ 4519-A



4518



1112

Kirit Patel M. 98240 88688
90188 20520

Girish Patel M. 76665 11199

Ambica Trading Corporation





✓ 4493



✓ 4496



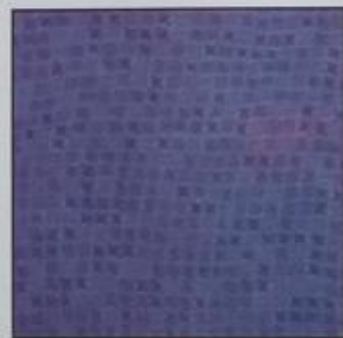
4478



4494



4498



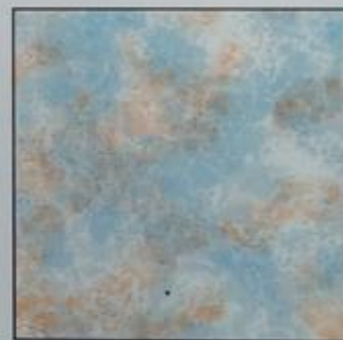
4481



✓ 4495



4497



5054



5502



5501



5055

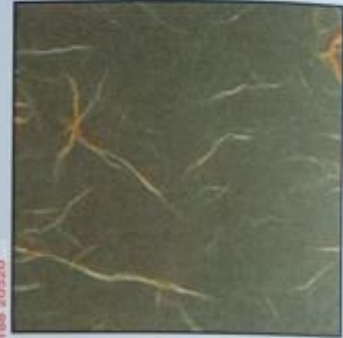
Ambica Trading Corporation
Girish Patel M. 79985 11199
Kirti Patel M. 98240 88888
90168 20520



8025



✓ 1059



1024



8026



4545



1023



8027



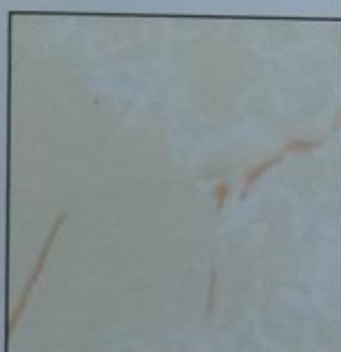
1077



1021



8028



✓ 5033



1022

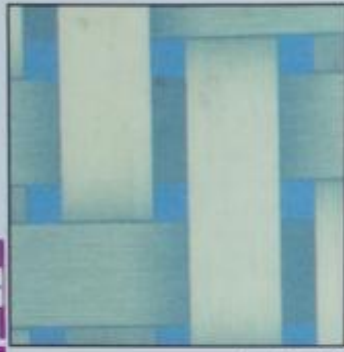
Girish Patel M. 76995 11199
Kirit Patel M. 99240 88688
90168 20520

Ambica Trading Corporation





4487



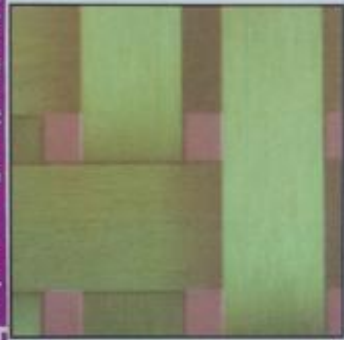
✓ 8013



✓ 5262



4485



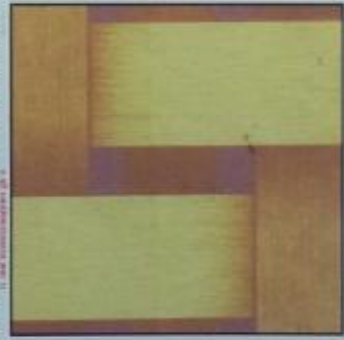
✓ 8014



✓ 5263



5505



✓ 8015



8017



4488



✓ 8016



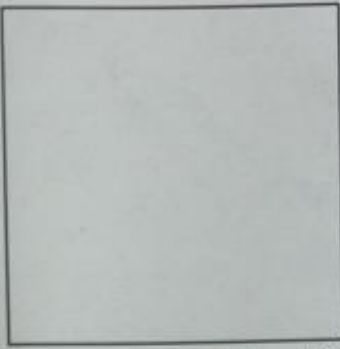
8018



Ambica Trading Corporation

Girish Patel M. 76905 11199

Kirti Patel M. 99240 86446
90168 20520



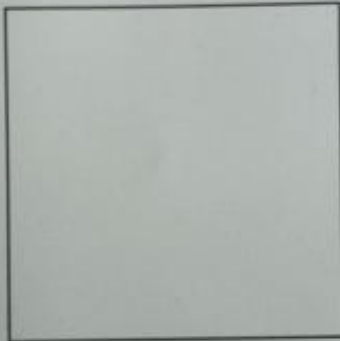
✓ 101



150



✓ 4486



✓ 102



119



✓ 4484



✓ 103



✓ 133



4544



✓ 104



✓ 145



4489

Girish Patel M. 76985 11199 Kirit Patel M. 98240 86688 90168 20520

Ambica Trading Corporation





✓ 5510



8155



1123



4527



8156



1124



✓ 4530



8108



1091



✓ 4555



8107



1092

Ambica Trading Corporation

Girish Patel M. 76985 11199 Kirti Patel M. 98249 86688
90168 20520



4409



✓ 4467



4562



4535



4464



4476



4536



4466



4422



✓ 4441



4438



4449

Ambica Trading Corporation

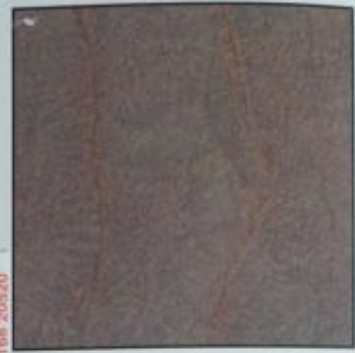
Grish Patel M. 76965 11199 Kirt Patel M. 98240 80688 90168 20520



✓ 1045



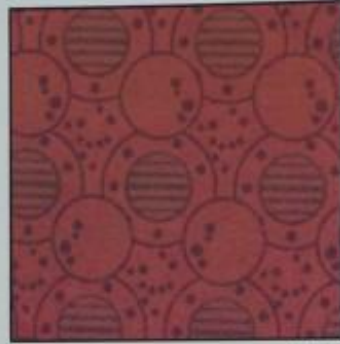
✓ 4520



4561



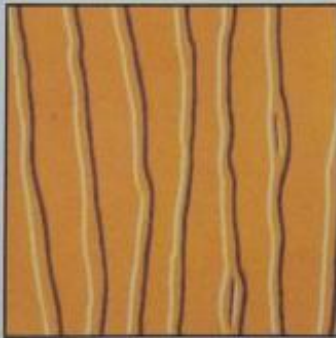
1046



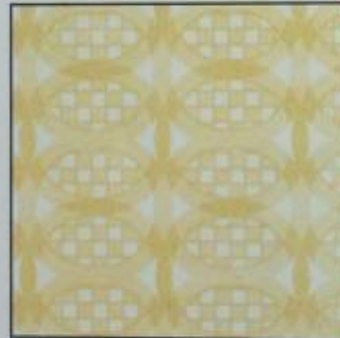
1141



5090



2153



8041



✓ 4541



2154



8042



4542

Kirih Patel M. 99840 86888
90188 20520
Girish Patel M. 76985 11199

Ambica Trading Corporation





✓ 2094



5212



2095



2106



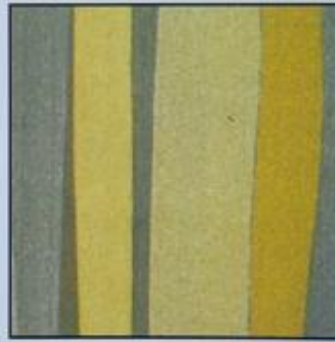
✓ 2107



2105



5261



5260



5259



8158



8159



8157

Girish Patel M. 76985-11199 Kirti Patel M. 98240-85688 90168-20520

Ambica Trading Corporation





5265



8161



8101



5266



8162



8102



5264



8163



2017



✓ 5267



8164



2019

Ambica Trading Corporation

Girish Patel M. 76965 11199
Kirti Patel M. 98240 86668
90168 20520



**BOTH SIDE HIGH PRESSURE DECORATIVE
LAMINATED COMPACT / BAKELITE / INDUSTRIAL SHEETS**

- Size : 8' x 4', 7' x 3', 9.25' x 4.25'
(other Size also available or order)
- Finish : available in Glossy & Matt Finish.
- Thickness : available in all standard thickness.
- Note : (1) + 0.05 % mm due to variation in paper in
different thickness.
(2) Displayed Images in the Catalogue are
Photocopy of Original Bakelite sheet. They may differ
From Original also Colour may vary from batch to batch.

Girish Patel M. 76985 11199

Kirit Patel M. 98240 86688
90168 20520



Ambica Trading Corporation

Stockist : **Both Side Laminate Sheet
Electrical Insulated Board
Bakelite Sheet, Partical Board
Aluminium Composite Panel**

H-19, Abhishek Estate, Nr. Asarwa Over Bridge,
Civil Hospital Road, Asarwa, Ahmedabad-380016.